



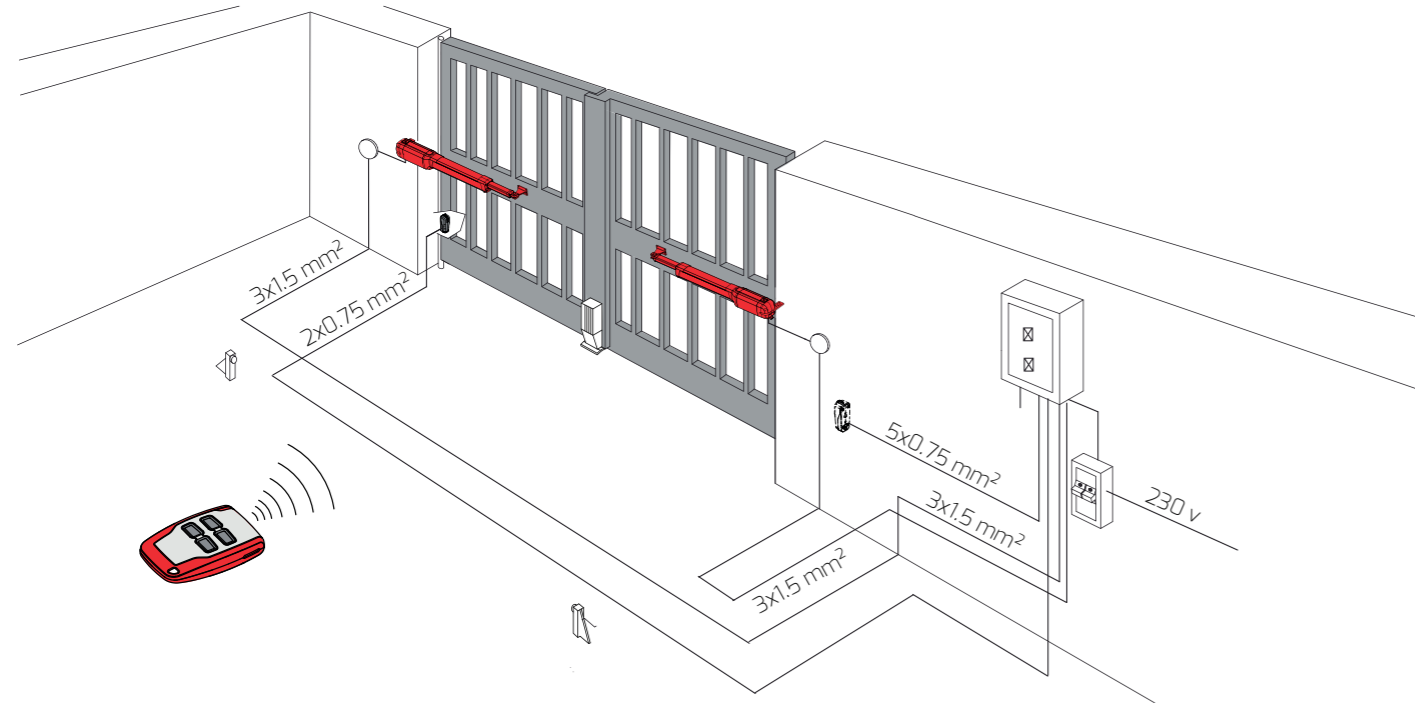
# KUSTOS ULTRA BT

FW ≥ v2.12

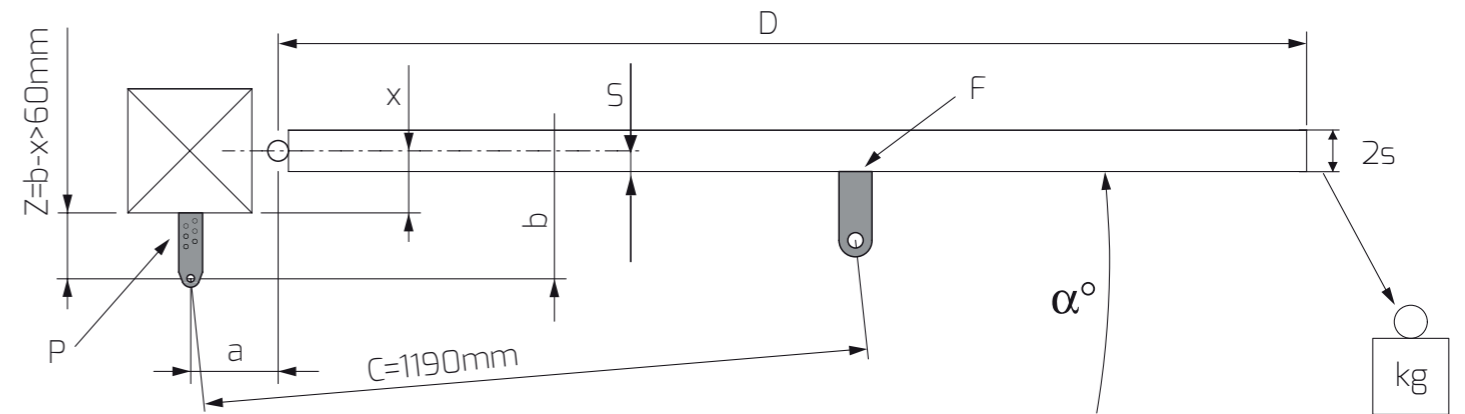
## 1 Cable run



Use normalised black cables  
R02V - H05VVF



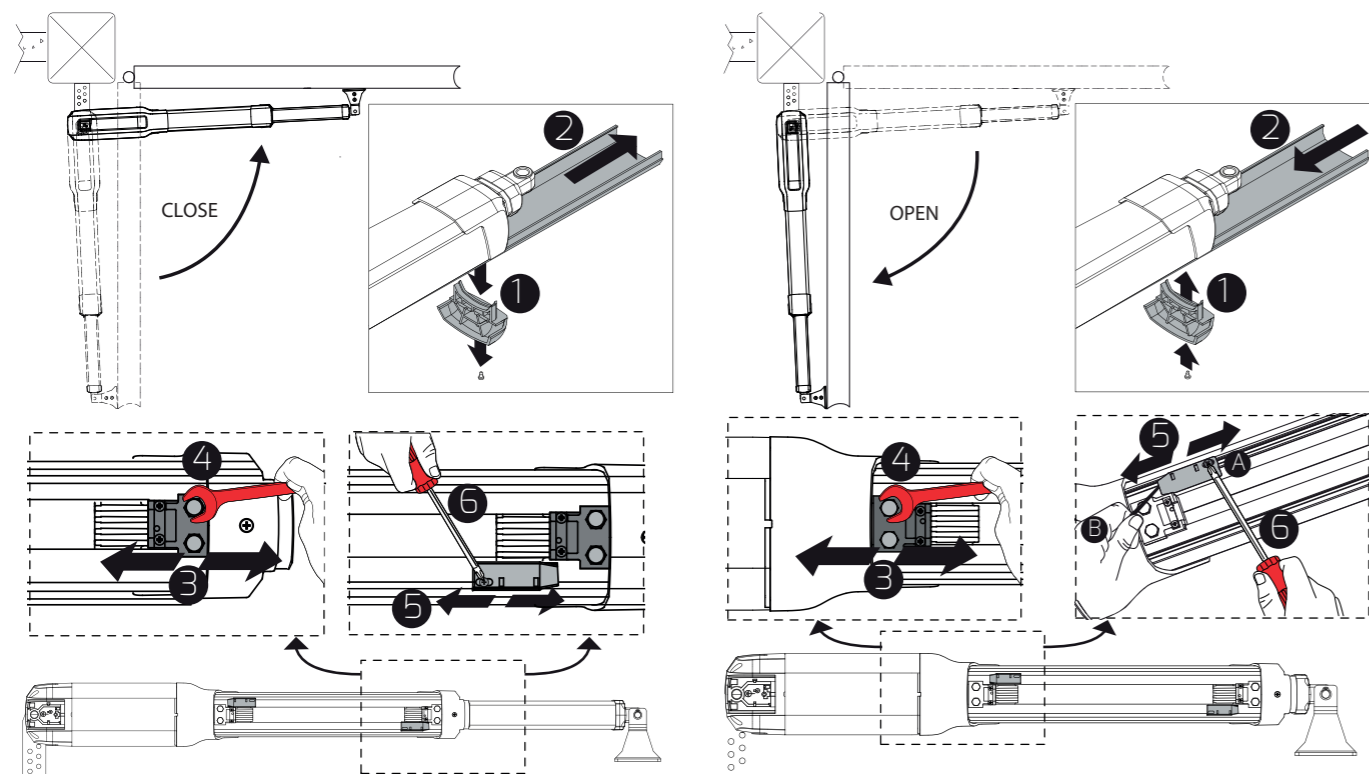
## 2 Motor fastening



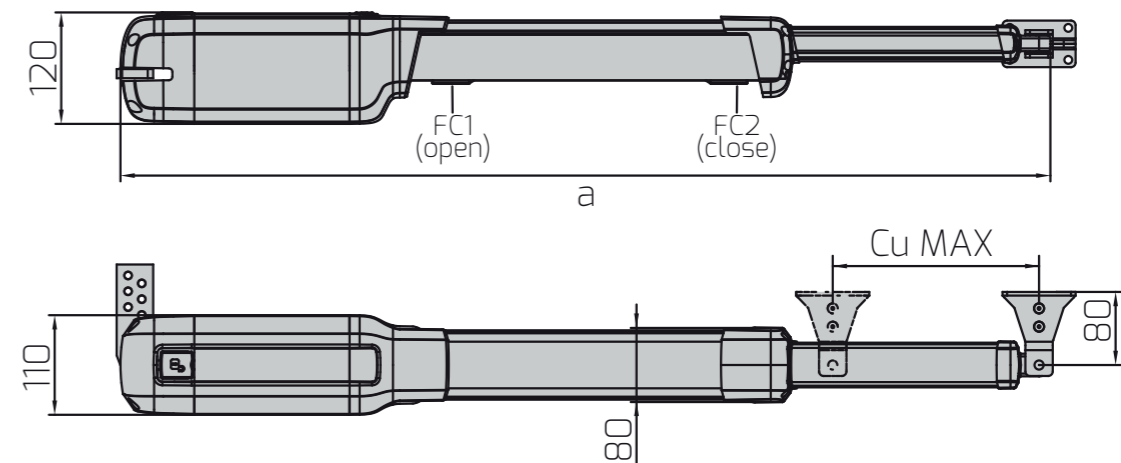
s (mm)	KUSTOS ULTRA BT A40	
	125 kg (~ 1250 N)	250 kg (~ 2500 N)
b (mm)		
20	130 ÷ 160	170 ÷ 260
30	130 ÷ 170	180 ÷ 260
40	130 ÷ 180	190 ÷ 260

b \ a	100	110	120	130	140	150	160	170	180	190	200	210	220
100					117	120	123	126	119	113	108	104	101
110				112	116	119	121	122	116	110	105	102	
120			107	110	114	117	120	117	111	106	102		
130			103	106	109	113	116	117	113	107	102		
140	97	102	105	108	112	115	113	110	103				
150	97	101	104	107	110	113	110	104					
160	97	100	104	107	109	110	105						
170	96	100	103	106	108	105							
180	96	100	103	106	107								
190	96	99	102	105									
200	96	98	101										
210	95	98											
220	95												alpha°

## 3 Limit switch adjustment (put motor in gear by moving the panel by hand)



Adjust the limit switches **5** and the stops **3** according to the diagrams, open/closed position. Once set up, fine-tune the adjustments.



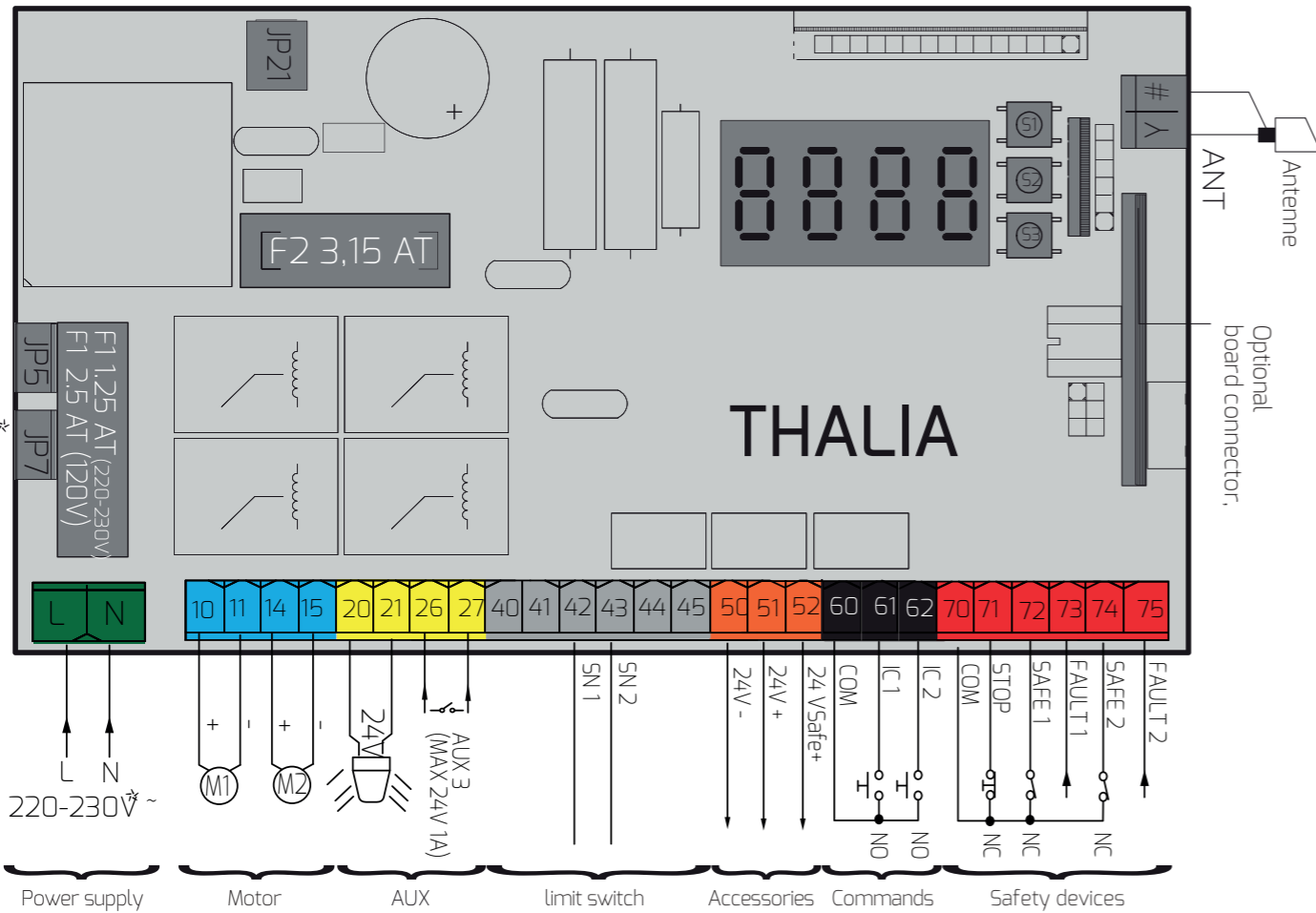
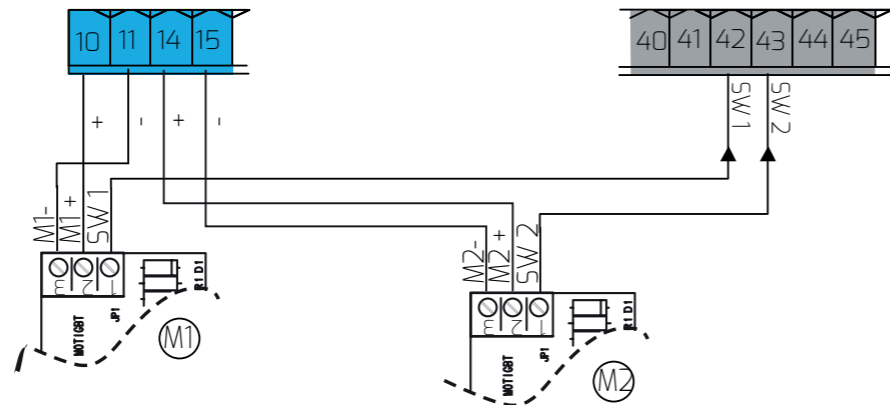
	a	Cu Max
KUSTOS ULTRA BT A40	1210	355

## 4 Programming (see reverse)

# Thalia control board

KUSTOS ULTRA BT	
Maximum Power	40 W
Maximum Cycle	53 13s-1-13s-1 x30 pause 90min.

Motor 1 opens first.

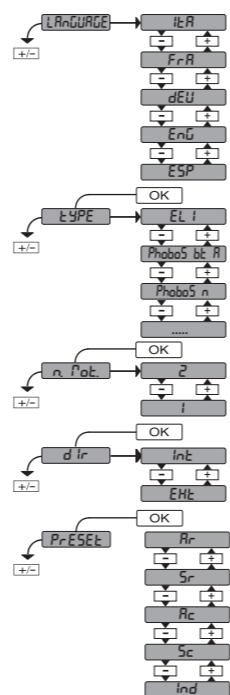


## 1 Simplified menu: basic regulations

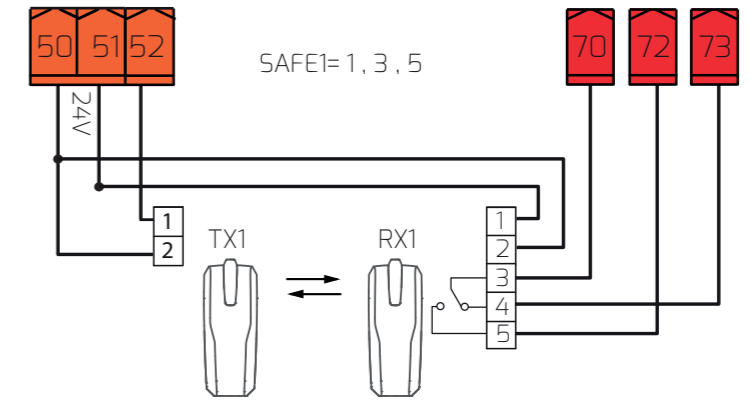


Motor at stroke centre and in gear:

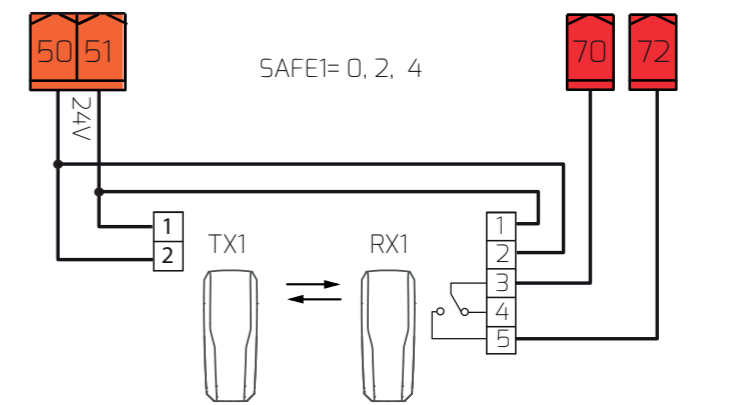
- apply power
  - 1x OK: language appears. 3x - (ENG) + click OK
  - select "type" of motor. x - (Kustos) + click OK
  - select number of motors (n. mot.). 2x - + click OK
  - select direction (direction of opening). Select (int. or ext.) + click OK
  - select preset. (Ar: auto closure or Sr: semi-auto closure). Select + click OK
  - start autoset with panels at half-travel; they close.
- If this is not a closing operation, then press +/- simultaneously.  
Reconnect the motors in the right direction (motor 1 switch 10&11; motor 2 switch 14&15)  
When autoset is finished, the display show OK.



2a Wire the THEA photocells.

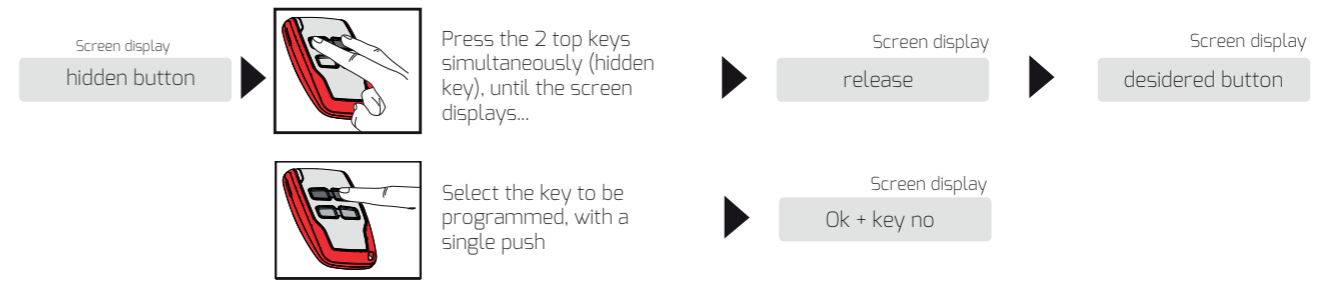


2b Wire the DESME photocells.



## 3 How to programme the remote control

- Access the radio menu
- Select the channel you want ("add start" total opening or "add2ch" for the 2nd channel), then press OK.



## 4 How to perform an open/close test by using the remote control.

As an option, you can go even further...

- 1- I wish to de-activate the photocells while opening: Access the **Logic** menu, scroll down to screen SAFE 1, go to 4.
- 2- I wish to access automatic closing: Access the **logic** menu, scroll down to the TCA screen, go to 1.
- 3- I wish to adjust the automatic closing time: Access the **Param** menu, click OK, and scroll down to the TCA screen, enter the value and click OK.
- 4- I wish to activate pedestrian opening: Access the **Logic** menu; scroll down to screen AUX 3, go to 1.(then continue programming the 2nd key on your remote control).